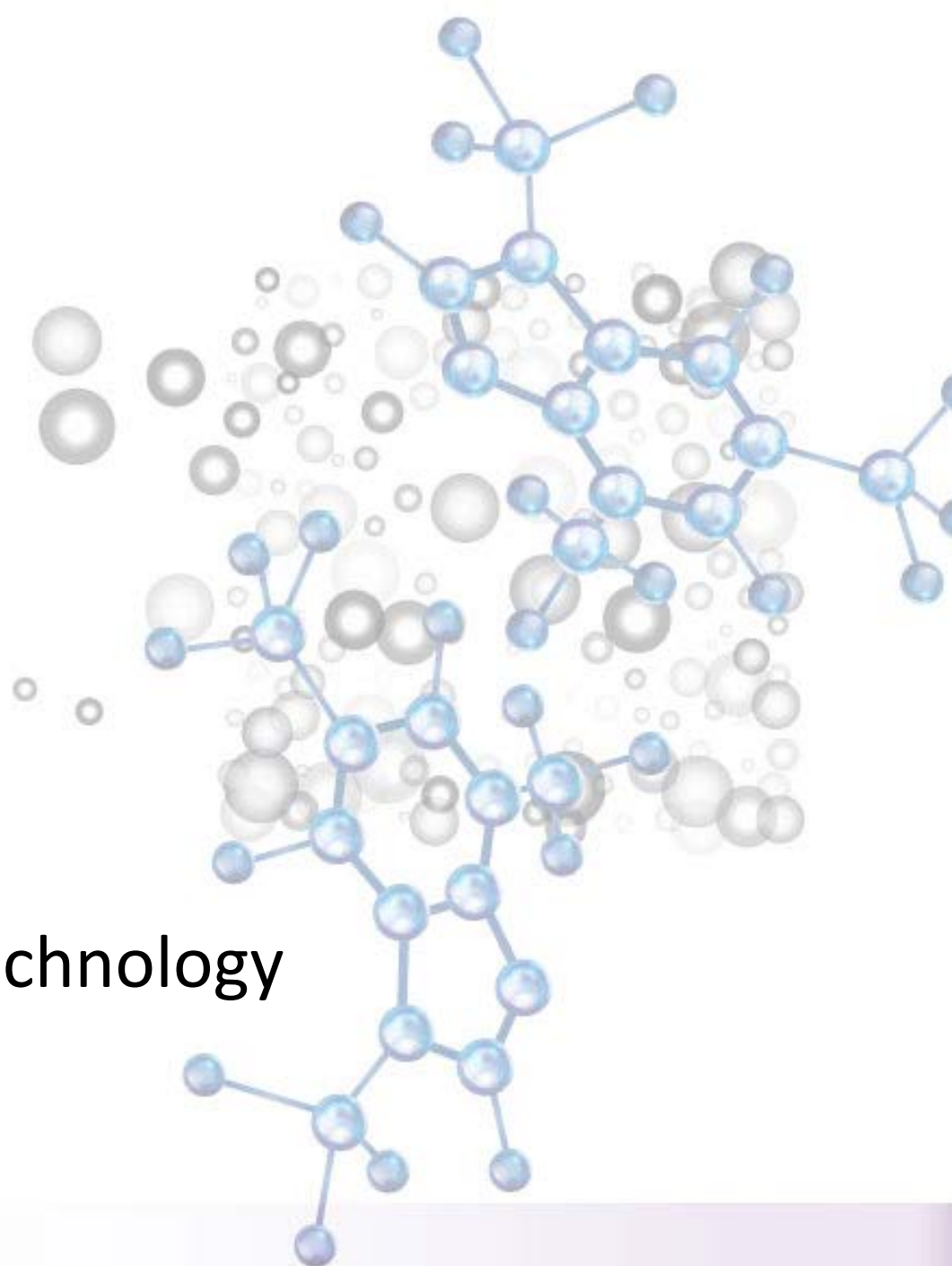




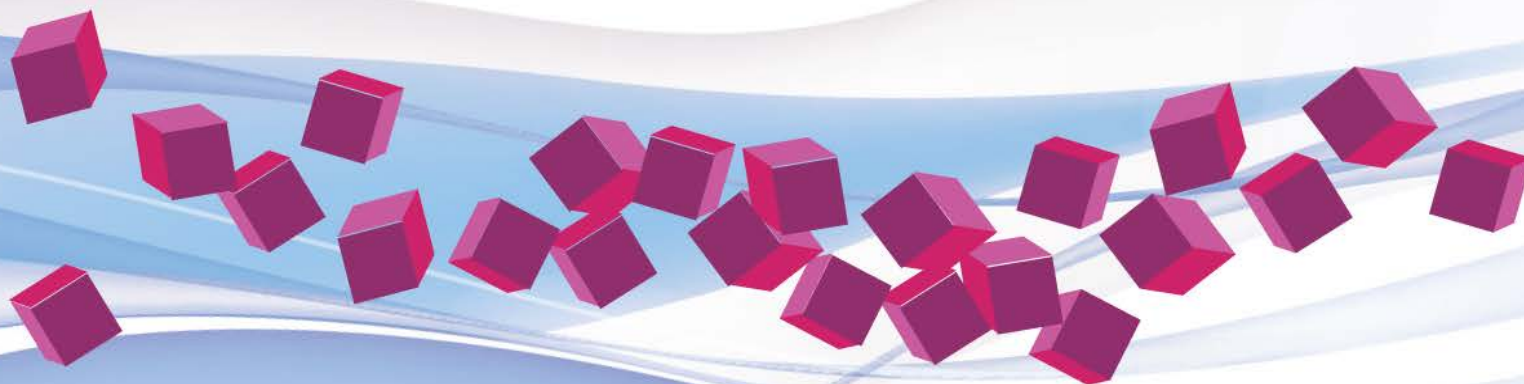
STIG
akciová společnost

Italian Innovative Biotechnology



ACTISYSTEMBOXES

Innovative Biotechnology



STIG
akciová spoločnosť



***WHAT is* ACTISYSTEMBOXES ?**

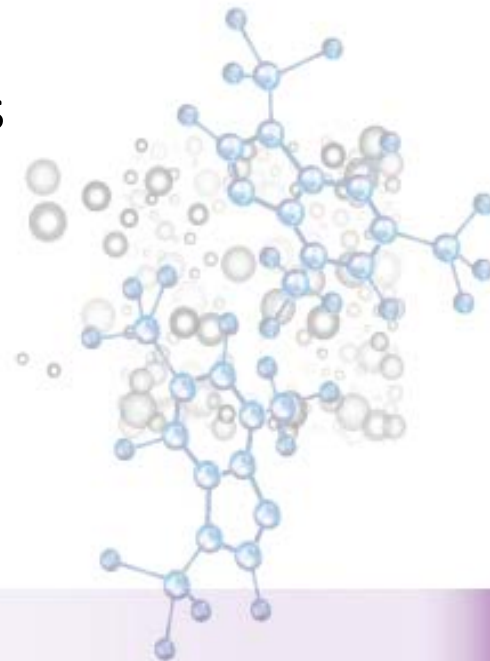
It is an innovative transport technology that allow nutraceuticals to be more effective.

***WHY* ACTISYSTEMBOXES is innovative ?**

Due to the new embedded production technology the active ingredients are released when determinate condition are met.

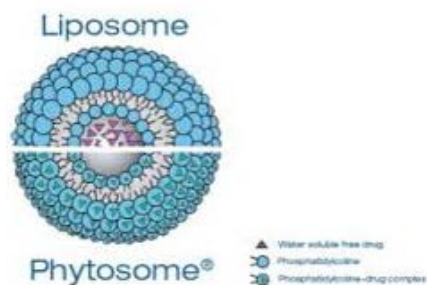
***Advantages of* ACTISYSTEMBOXES ?**

This programmed release technology allows lowering the minimum effective doses of the active ingredients up to 1/10 of the dose normally used in the treatment.



DIFFERENCES OF CARRIERS USED CURRENTLY

Almost all nutraceuticals using transport technologies are equipped with spherical-shaped liposomal systems.

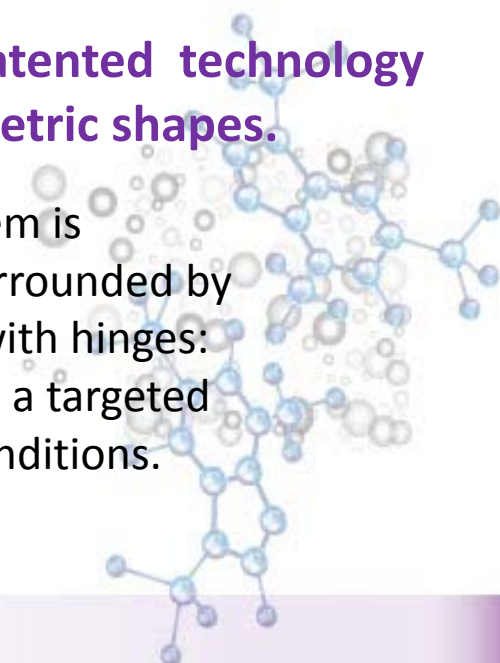


The liposomal system is characterized by a sphere that transports the substances inside it. When reach the circulatory system is where the sphere opens up randomly through the fissures of its envelope.

Producer differs from all competitors using its own patented technology (ACTISYSTEMBOXES) characterized by non-spherical geometric shapes.



The ACTISYSTEMBOXES system is characterized by "boxes", surrounded by complex sugars and closed with hinges: we release the substances in a targeted manner under certain PH conditions.



ACTISYSTEMBOXES OPERATION



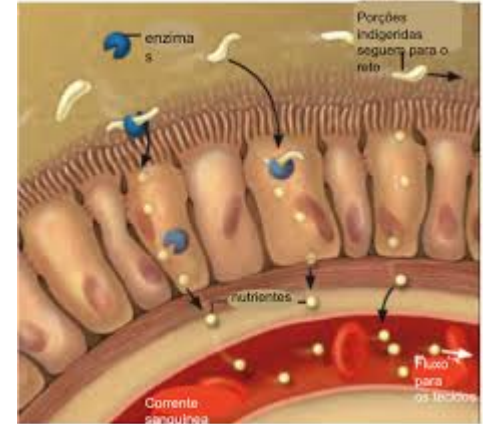
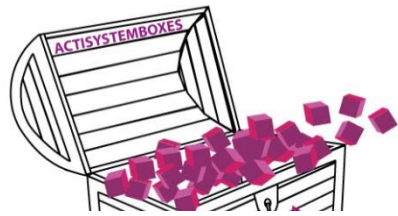
After swallowing the capsule on a fast, it arrives in the stomach.



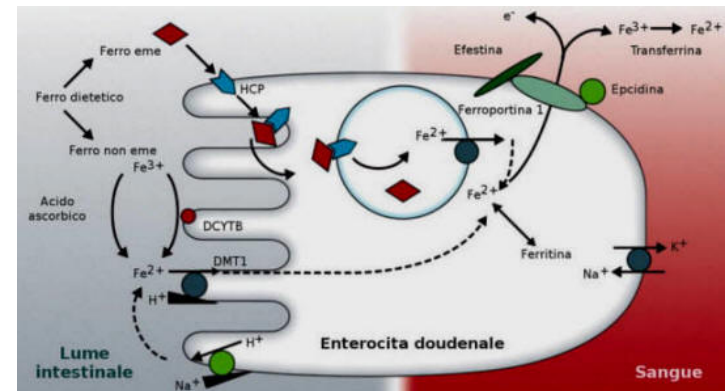
In the stomach the capsule breaks up releasing the Actisystemboxes which at very acidic pH (0-6) remain completely intact and transit towards the first part of the intestine.



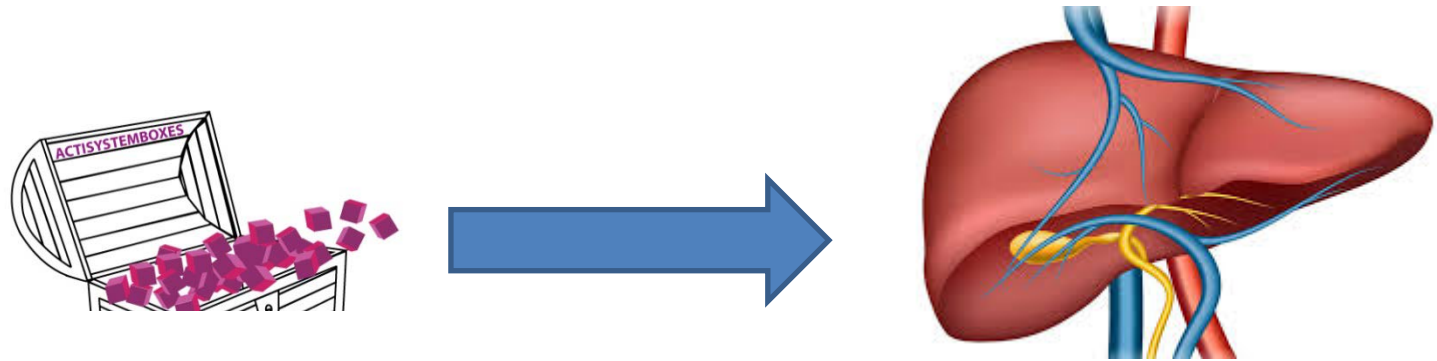
ACTISYSTEMBOXES OPERATION



In the intestinal tract (fasting-tenuous), thanks to the presence of complex sugars, Actisystemboxes are recognized by enterocytes as nutrients and for transcytosis pass from the intestinal lumen to the circulatory system.



ACTISYSTEMBOXES OPERATION



After entry into the bloodstream the ACTISYSTEMBOXES pass from the liver without undergoing any metabolization (so no interference on the metabolism of drugs at the level of cytochrome P450)

At this point every single product that uses the technology Actisystemboxes follows a different path depending on the pathology to be treated



ACTISYSTEMBOXES RANGE



FERBOX transports the iron into the spleen



OPERA transports its active ingredients in the various districts (nerves, tendons, muscles, bones and soft tissues)



KUZIK transports its assets into the brain



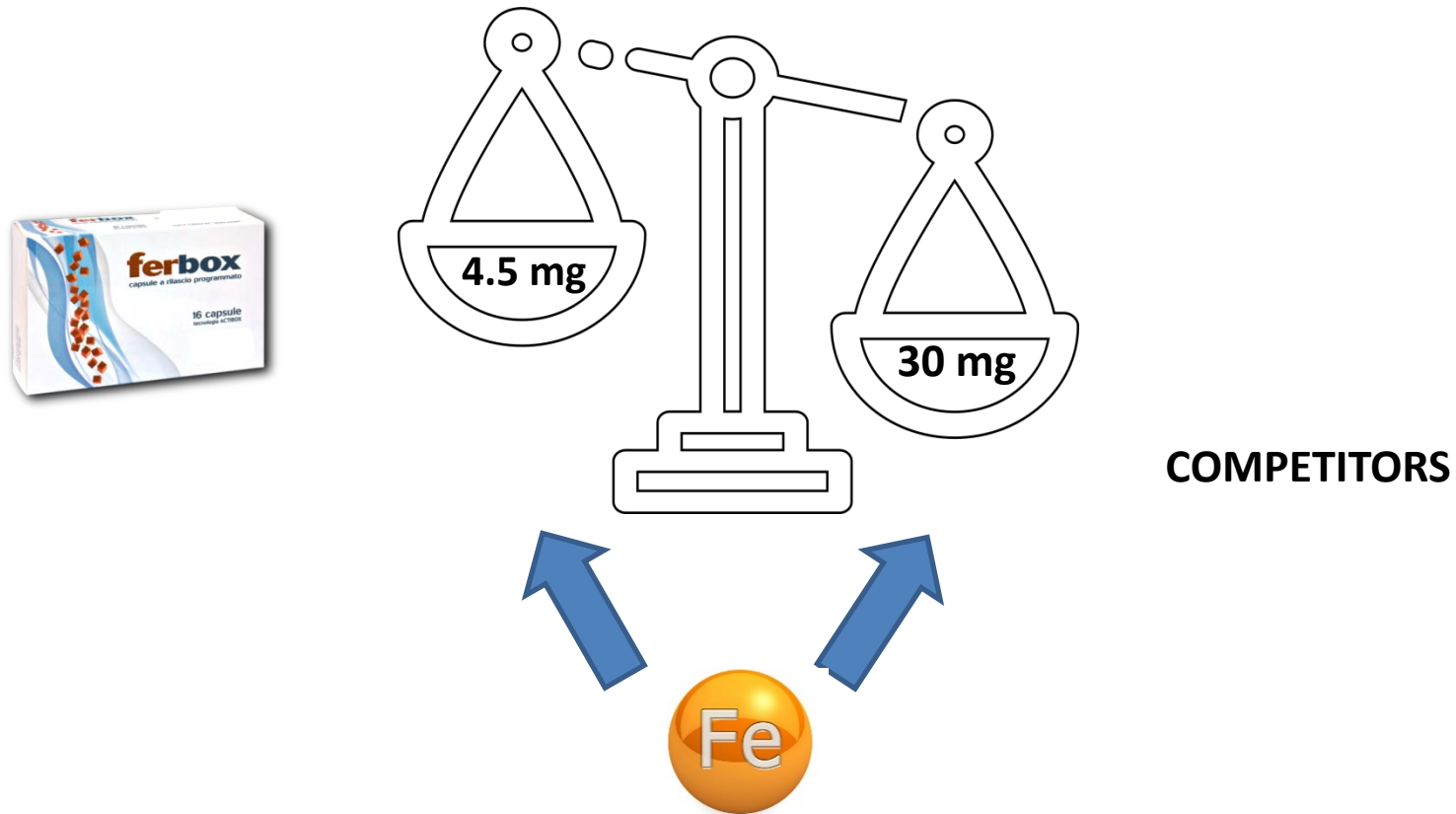
NEW 2019



QUILLI transports its assets into the brain



AN EXAMPLE OF USE OF OUR TECHNOLOGY ON IRON NUTRITIONAL SUPPLEMENT



As can be seen from the above image, our technology (Actisystemboxes) allows us to use only **4.5 mg.** of iron instead of the usual **30 mg.** An amount, in this case, **about 7 times lower.**

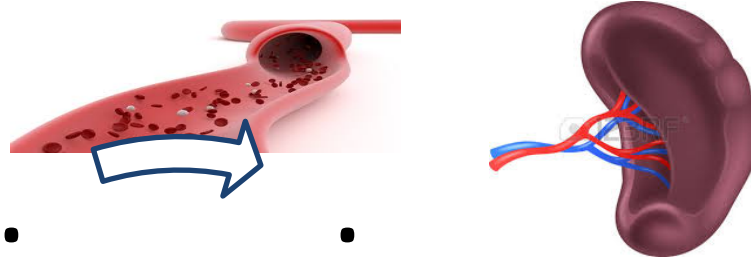
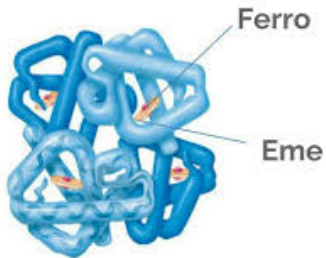




FERBOX 16 cps : ferro 4,5 mg

(bisglicinato - bivalente)

Emoglobina

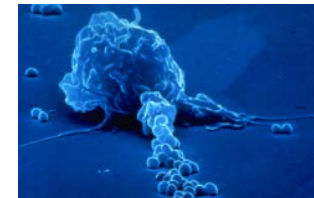


SPLEEN: the only organ that has a constant inflammatory condition linked to hemolysis and to the release of interleukin 2

The actisystemboxes open up relasing the iron contained in it.



The macrophages, deputies to recover the iron after the disintegration of the red blood cell at the end of life, (Hemolysis) to which is added the Iron released by Actisystemboxes

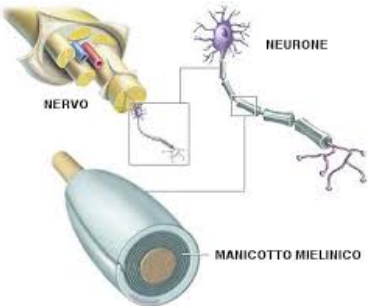


OPERA 20 cps

(Acido alfa lipoico-MSM-Boswellia-Bromelina)



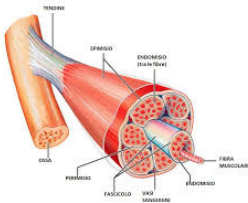
ACUTE FLAMES



NERVE



MUSCLE



TENDON



JOINT



SOFT TISSUE

After entry into the bloodstream and the passing from the liver without undergoing any degradation, the Actisystemboxes reach the capillaries of the various districts affected by inflammatory states characterized by PH 7.01: here they open up releasing the biologically active substances.





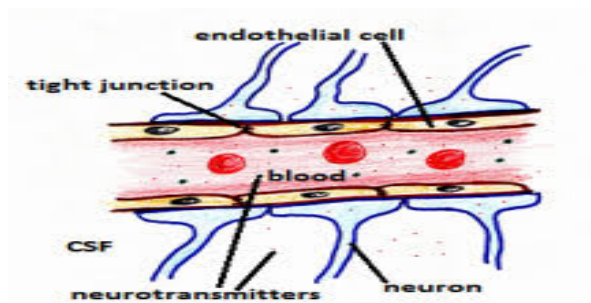
KUZIK 30 cps

Kudzu (pueraria lobata)

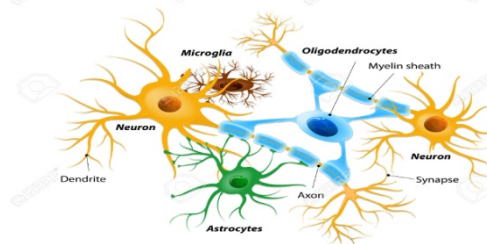
**EMICRANIA - CEFALEA -
COGNITIVE DISORDERS -
MICROCIRCULAR PROBLEMS**



At the level of glial cells
actisystemboxes open up
freeing the active
ingredients that go to act
at the level of neurons



NEURONS AND NEUROGLIAL CELLS



Endothelial cells
recognize the sugars
that surround the
actisystemboxes and
transport them
through the blood-
brain barrier to the
glial cells





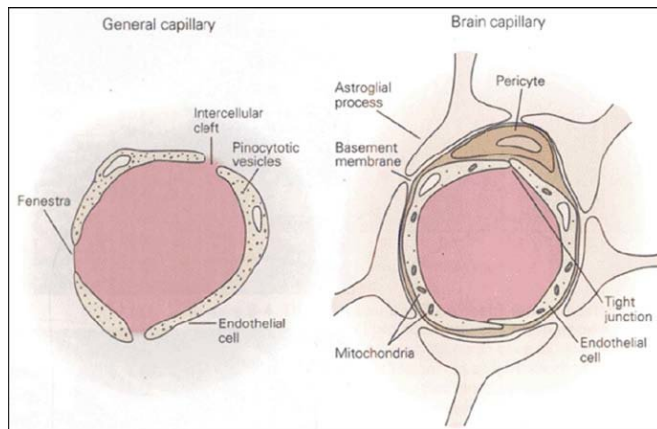
QUILLI 14 vials

Saffron, Kudzu, Griffonia, L-triptofano, Mg., Relaxmel, Lactium

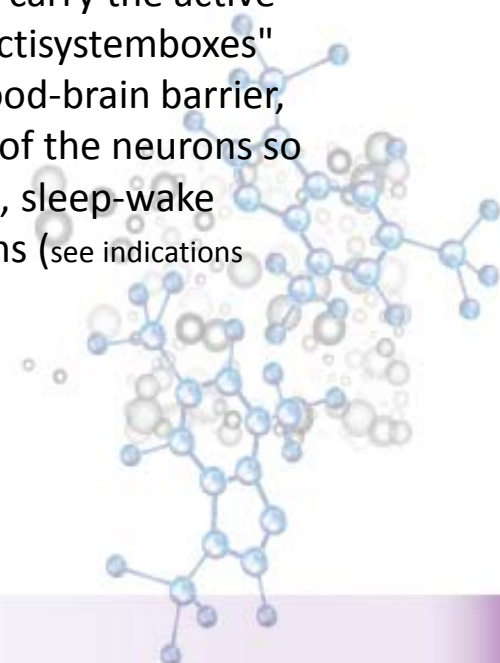
NEW 2019

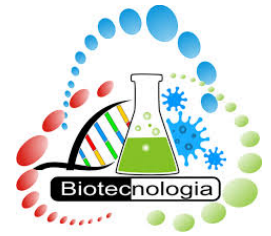
**INDICATIONS: Anxiety, psychophysical stress, mood swings.
Muscle tension. Fibromyalgia.
Sleep / wake cycle regulator, insomnia.
Metabolic imbalances. Irritable colon with stress factors.**

THE HEMATO-ENCEPHALIC BARRIER



QUILLI has been created to carry the active ingredients through our "Actisystemboxes" technology, beyond the blood-brain barrier, acting directly on the level of the neurons so as to control anxiety, stress, sleep-wake rhythm and other symptoms (see indications above).





PROPERTARY FORMULA AND CUSTOM MADE PRODUCTION

Do you have your formulation and would like to have a more effective product ?

Why not using our unique and breakthrough "Actisystemboxes" technology.

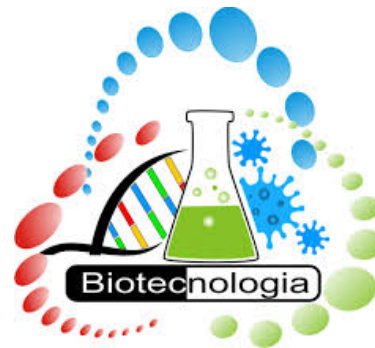
If you are interested contact us to discuss, further.

*After licensee pre approval and technical investigation
we can developed your new products.*





THANKS FOR YOUR ATTENTION



STIG, a.s.

Glazunovova 885/8

14800 Praha - Kunratice

+420 244 912 158

+420 244 911 151

pragueoffice@stig.cz

www.stig.cz

